



# NATURAL RESOURCES

THE CITIES OF  
BEVERLY AND SALEM  
HAVE PARTNERED TO  
CREATE **RESILIENT  
TOGETHER**: OUR  
PLAN TO TAKE  
COLLECTIVE ACTION  
IN THE FACE OF THE  
CLIMATE CRISIS.

HOW CAN  
OUR **NATURAL  
RESOURCES**  
SUPPORT OUR  
LONG-TERM  
RESILIENCE AND  
SUSTAINABILITY?

Preserving and enhancing our local air quality, biodiversity, tree canopy, water quality, beaches and shorelines, wildlife, and open spaces.

## WHAT DOES **NATURAL RESOURCES** INCLUDE?

Expanding and protecting accessible parks and open space

Supporting healthy ecosystems and habitats

Maintaining high standards for air and water quality

Expanding and improving the health of the tree canopy across the cities

1.

Healthy natural spaces serve as carbon sinks, reducing the amount of carbon in the atmosphere.

2.

Clean air and water improve public health and provide healthy conditions for wildlife.

3.

Trees and green spaces cool cities down by providing shade, enabling water infiltration, and reducing the urban heat island effect.

4.

Coastal wetlands and vegetation help to protect coastal areas from sea level rise, storm surge, and erosion, among other important ecosystem services.

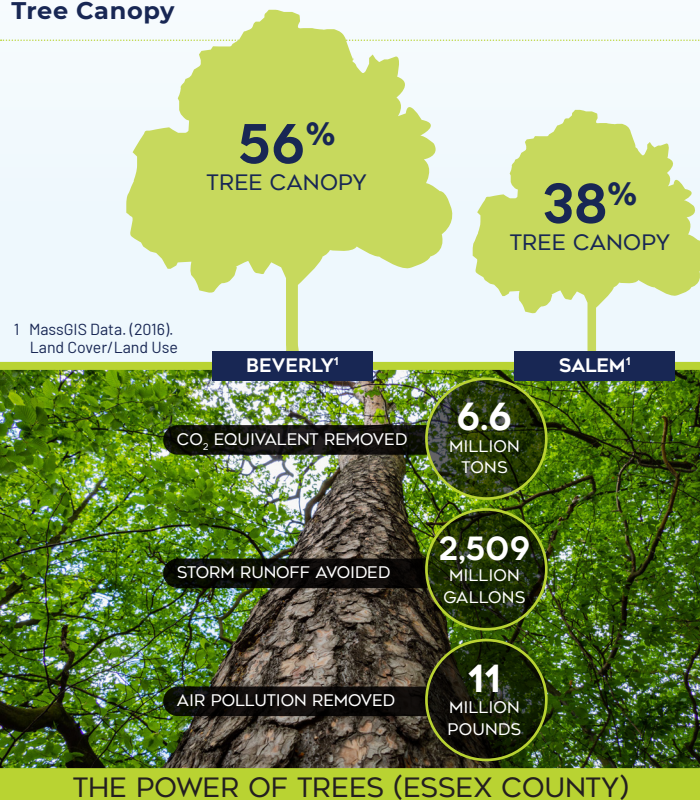




## Open Space (% of city area)



## Tree Canopy



Source: U.S. Forest Service i-Tree County Tool

Some of the natural resources strategies being considered for the **Resilient Together** plan include, but are not limited to:

- › Enhance city-wide tree planting and tree maintenance programs.
- › Start environmental education programs that cultivate respect for the environment, teach healthy behavior, and prepare people to be stewards for the environment.
- › Expand and promote incentives for native plants and low-water use landscaping, as well as low impact development (LID).
- › Coordinate land management with regional neighboring towns to maintain the health of tree canopy and protect the functioning of its ecosystem-services.
- › Identify opportunities for creating open space and playground facilities in dense neighborhoods that lack sufficient recreation space.
- › Create a trail network throughout the Cities.
- › Facilitate tidal wetland restoration to protect marine habitat and improve coastal resilience.

## DID YOU KNOW?

### URBAN HEAT ISLAND EFFECT

The difference in temperature in urban areas compared to nearby rural areas caused by the presence of more roads, sidewalks, and buildings and the absence of trees and green spaces.



Beverly and Salem are prioritizing the protection and enhancement of open space and natural vegetation. Both Cities are establishing stewardship programs to encourage participation in open space improvements and maintenance activities to help reduce and provide refuge from urban heat island impacts.

LEARN MORE AND SHARE YOUR IDEAS AT  
**RESILIENT-TOGETHER.ORG**