



Planning for New Bedford's Future

Identifying Hazards and Solutions

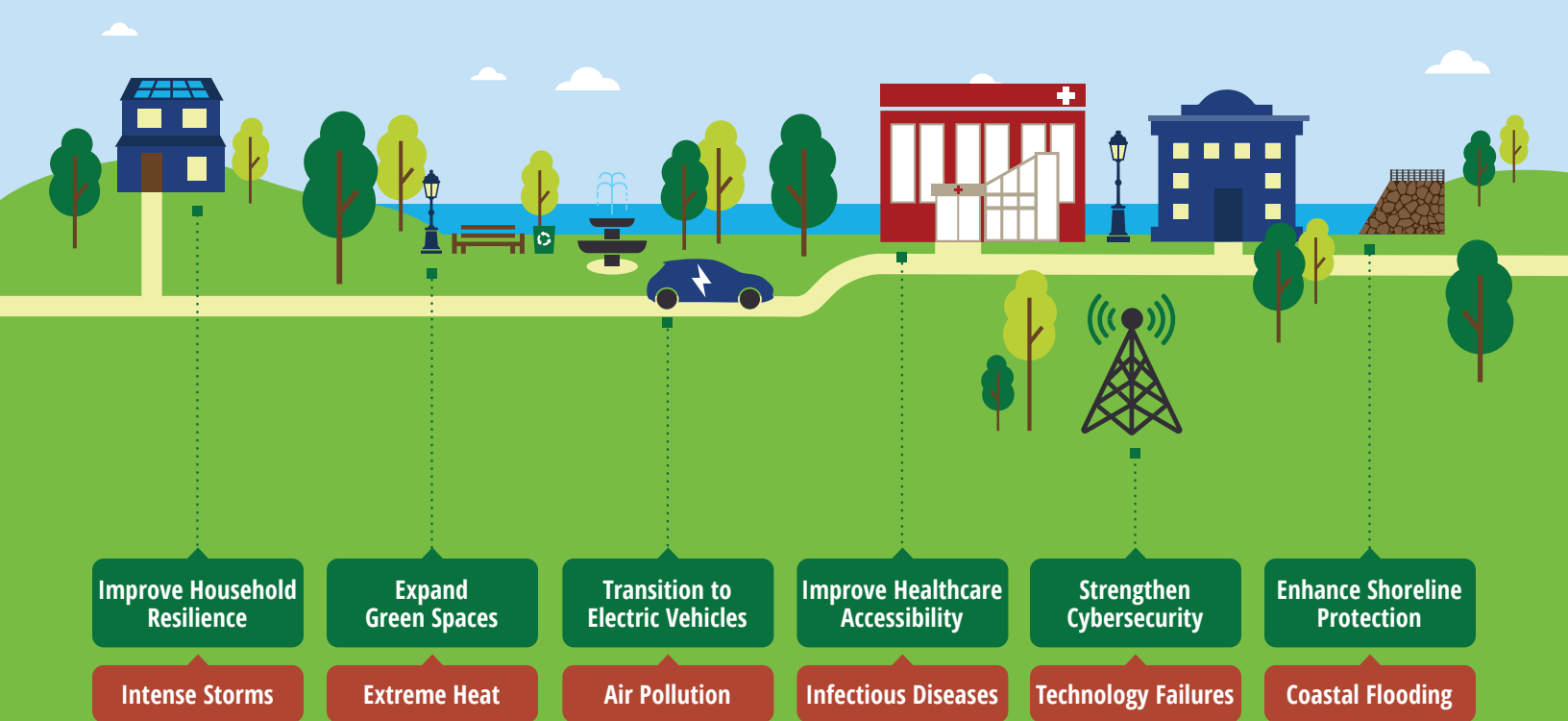
New Bedford is home to a bustling waterfront, a historic downtown, and abundant natural resources. However, we need to plan to ensure that climate change as well as other human-caused and technological hazards do not negatively impact our longstanding institutions and vibrant communities in the future. Already, we are seeing all types of hazards, from extreme storms and heat waves to infectious diseases and technology failures, take a toll on people and property. As New Bedford looks ahead, mitigating and preparing for these hazards is critical to creating a more resilient future for all.

NATURAL, HUMAN-CAUSED, & TECHNOLOGICAL HAZARDS

Occurrences that pose immediate and long-term threats to humans and the environment.

MITIGATION & ADAPTATION SOLUTIONS

Examples of actions that reduce emissions of climate warming gases and minimize vulnerability to hazards.





EXTREME HEAT

Historic Trends

9.17

days per year above 90 degrees F (2015-2020)¹



INTENSE STORMS

55%

increase in total volume of rainfall during extreme events since 1950³



FLOODS

8,295

housing units are within FEMA designated flood hazard areas⁵



SEA LEVEL RISE

IT TOOK **36**

years (1980-2016) for the sea level to rise around 6 inches⁷

Future Projections

(compared to 1961-1990)

24.8

days per year above 90 degrees F by 2050²

UP TO AN ADDITIONAL 48%

increase in total annual precipitation by 2050⁴

UP TO 130%

increase in days with 1" or more of precipitation by 2050⁶

IN THE NEXT 15

years (2017-2032), the sea level is projected to rise another 6 inches⁸

^{1,5} CDC National Public Health Tracking Network (2023), accessed from <https://ephtracking.cdc.gov/DataExplorer>.

^{2,4,6} U.S. Federal Government (2022), Climate Mapping and Resilience Assessment, accessed from <https://resilience.climate.gov>.

^{7,8} Sea Level Rise (2023), The Future of Sea Level Rise, accessed from <https://sealevelrise.org/>.

Why Hazard Mitigation Planning?



Hazard mitigation planning will enable New Bedford to identify risks and vulnerabilities associated with hazards and develop long-term strategies for protecting people and property. Learn more on the [NB Resilient Dashboard](#).



PRIORITIZING EQUITY

New Bedford has connected with **23 community organizations** so far to ensure equitable engagement is at the forefront of the hazard mitigation planning process. To connect your organization, please contact Michele.Paul@newbedford-ma.gov



Share your personal experiences with hazards through our community survey



Attend your local neighborhood meeting



Learn more about Hazard Mitigation on the NB Resilient Dashboard