



NB RESILIENT IS NEW BEDFORD'S PLAN FOR CLIMATE ACTION + RESILIENCE

WE ARE FOCUSING ON SIX AREAS



Climate & Energy



Economy & Jobs



Infrastructure, Utilities, & Waste



Natural Resources



Public Health & Safety



Transportation & Land Use

Climate & Energy



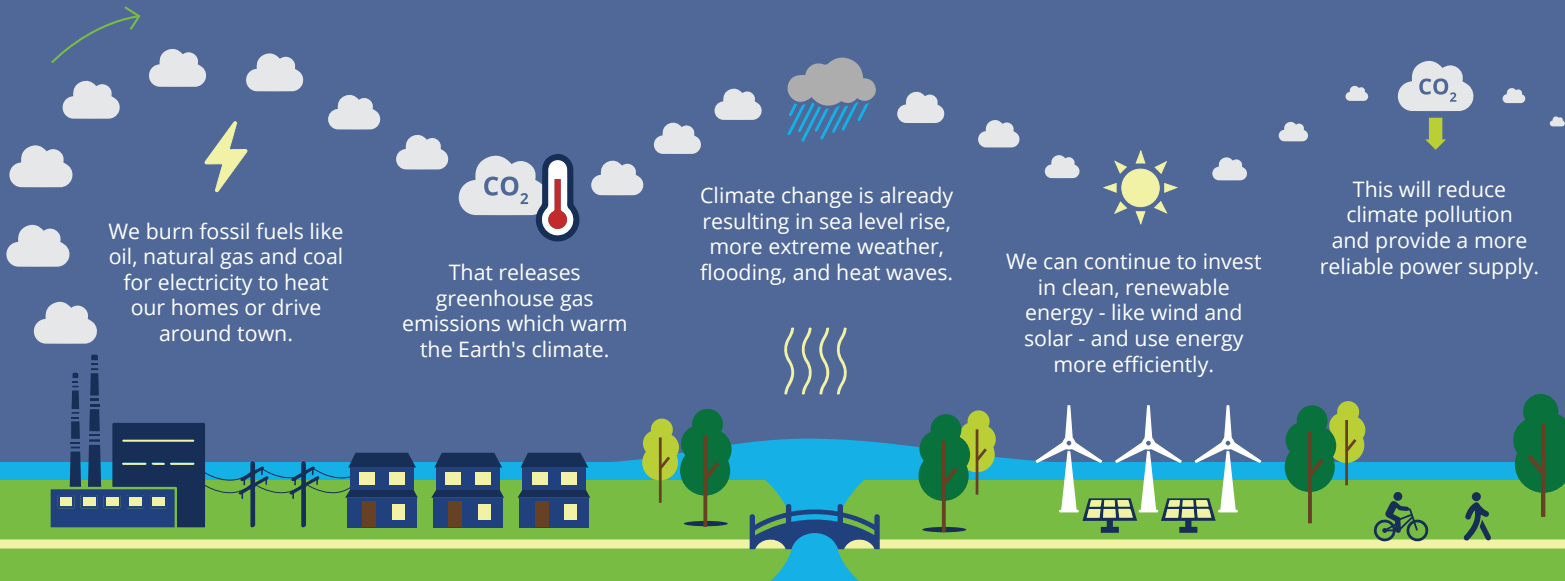
VISION

NEW BEDFORD is an international model of how the City, residents and businesses all actively play a role in reducing our contribution to climate change by lowering our greenhouse gas emissions and greening our energy supply.

GOALS

- Use 100% renewable sources for the City of New Bedford's energy by 2050.
- Reduce residential, municipal and commercial energy consumption 35% by 2030, using 2013 as a baseline.
- Reduce community-wide greenhouse gas emissions 35% below 2017 levels by 2030, toward a path to net zero GHG emissions by 2050.
- Work with partners to reduce the vulnerability of the energy system due to extreme weather or peak demand.

THE IMPACT OF HOW WE PRODUCE & USE ENERGY



WHERE DO NEW BEDFORD'S GREENHOUSE GASES COME FROM?

Reducing greenhouse gas emissions from our major contributors - buildings and transportation - will be key to our emission reduction efforts.



All data sources can be found at nbresilient.com

TAKING ACTION TODAY REDUCES COSTS FOR TOMORROW

\$400,000

spike in natural gas cost to the City from a 2-day cold snap in Jan 2018

\$600,000

increase on the City's natural gas bill from the polar vortex in 2014 & 2015

LEADING THE WAY ON CLIMATE & ENERGY SOLUTIONS



8,000

street and traffic lights replaced with power-saving LEDs



23

electric vehicles in the municipal fleet



400

residential rooftop solar systems installed



\$4,000,000

dollars saved from residential **energy aggregation** since June 2014



POTENTIAL ACTIONS

- Establish infrastructure to support micro-grids within the city for auxiliary power.
- Address cultural and income barriers to implementing energy efficiency.
- Green the municipal fleet and reduce emissions 50% by 2030.
- Build up redundancies for critical facilities.
- Establish a program to support low to moderate income families in switching to solar.
- Upgrade the underground electrical cables to mitigate flood impacts.
- Create a green business award or incentive program for energy efficiency.

energy aggregation

noun • Bulk-purchasing methods that result in reduced electricity costs for participating municipalities or organizations.



A resilient New Bedford is a thriving, self-sustaining community that is culturally and historically secure and ready to implement innovative approaches to prepare for tomorrow's possibilities.

GET UPDATES ON EACH FOCUS AREA AND WAYS TO GET INVOLVED AT:

NBRESILIENT.COM