



# ONE CLIMATE FUTURE

**Charting a Course *for*  
Portland and South Portland**

Strategy Development  
April 28, 2020

# We take partnering very seriously.

**Julie Rosenbach**  
Sustainability Director  
South Portland

**Troy Moon**  
Sustainability Director  
Portland



**Ashley Krulik**  
Sustainability Associate  
Portland

**Lucy Perkins**  
Sustainability Coordinator  
South Portland





# Today's Workshop

Our Goals

How to Participate

One Climate Future Update

Focus Areas Discussions

---

Who might also join us....



Manny



Snowflake



Henry



Herbie



A large crowd of young people, mostly teenagers, are gathered in front of a large, multi-story stone building with arched windows and doorways. Many of the protesters are holding up signs and banners. One person is sitting on a ledge of the building, holding a purple flag with a globe design. The scene is outdoors, and the weather appears to be overcast. The crowd is dense, and the protesters are looking in various directions, some towards the camera and others towards the building.

# Climate Goals

80% reduction in GHG emissions by 2050

100% clean energy by 2040

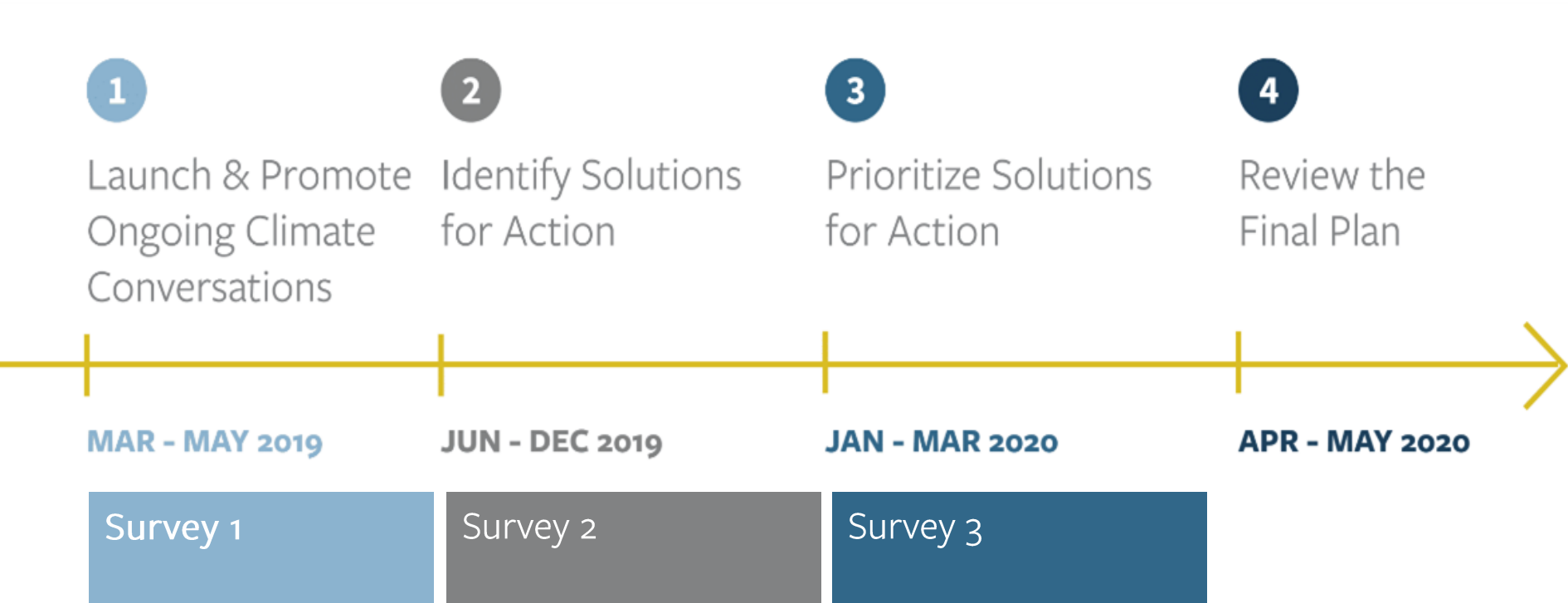


# Vision

Together, Portland and South Portland work to be inclusive, vibrant communities that provide opportunities for residents and businesses to thrive in a changing climate.



# Progress



# Our Contribution to Climate Change

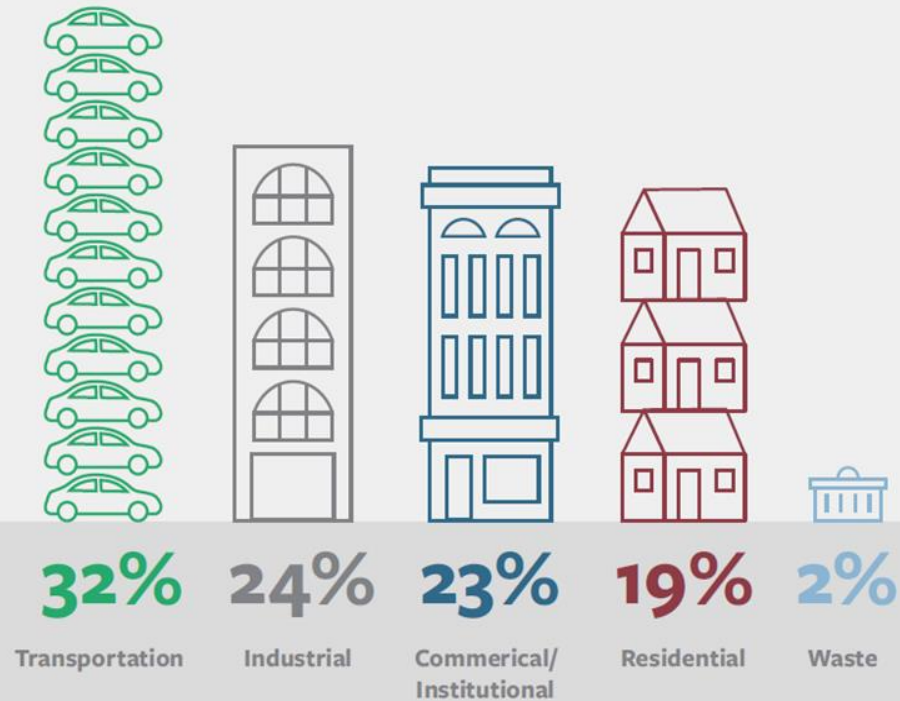
## City of Portland's Greenhouse Gas Emissions

Total Emissions in 2017 = 837,940 tCO<sub>2</sub>e/year



## City of South Portland's Greenhouse Gas Emissions

Total Emissions in 2017 = 352,364 tCO<sub>2</sub>e/year



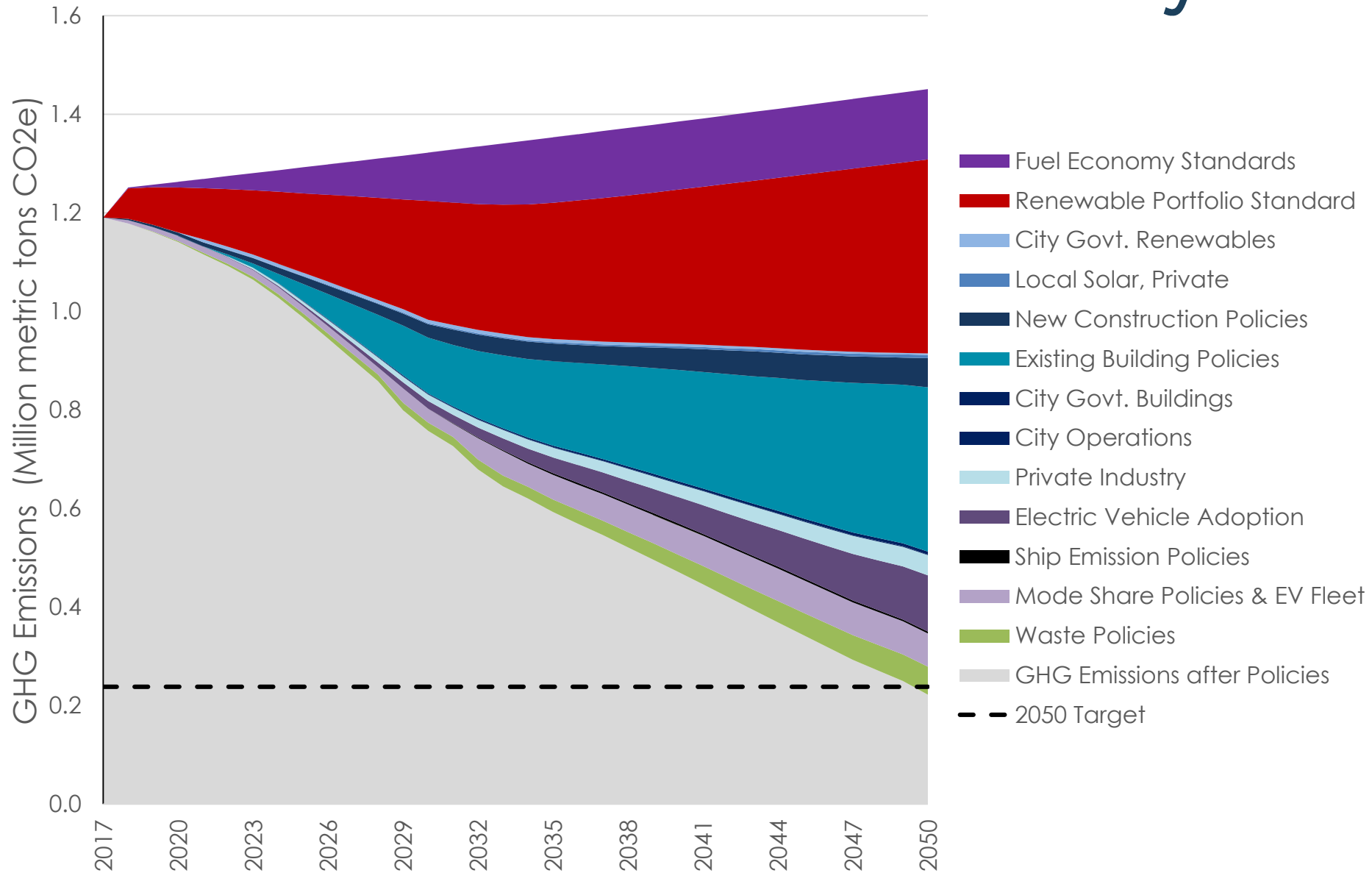


How do we reduce these impacts?





# Emissions Reduction Pathway



# Focus Areas Discussion

Buildings & Energy Use  
Transportation & Land Use  
Waste Reduction  
Climate Resilience



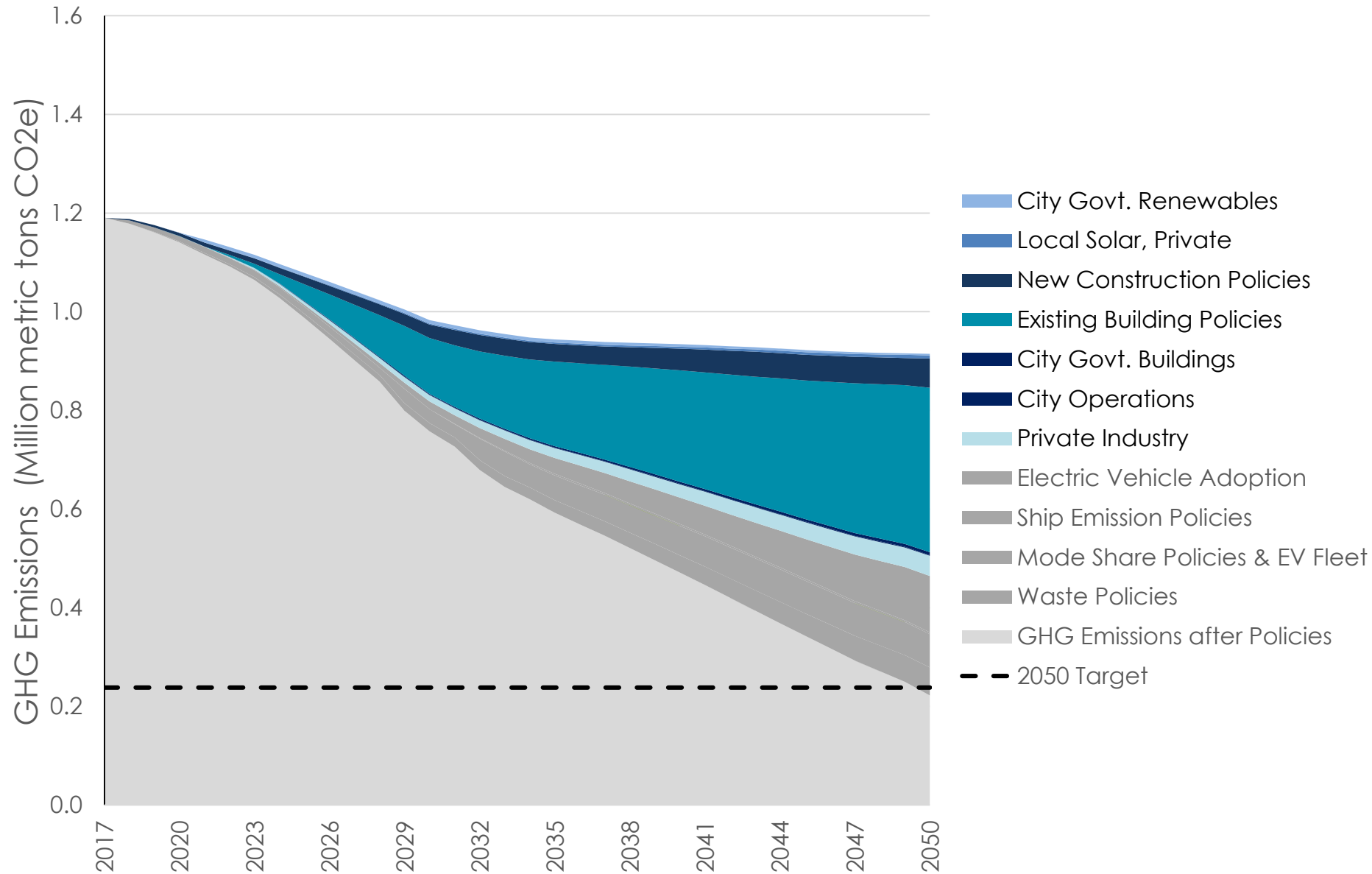


# Buildings and Energy

**Goal:** Use energy efficiently, transition to renewable energy, and encourage high performing buildings.



# Buildings and Energy

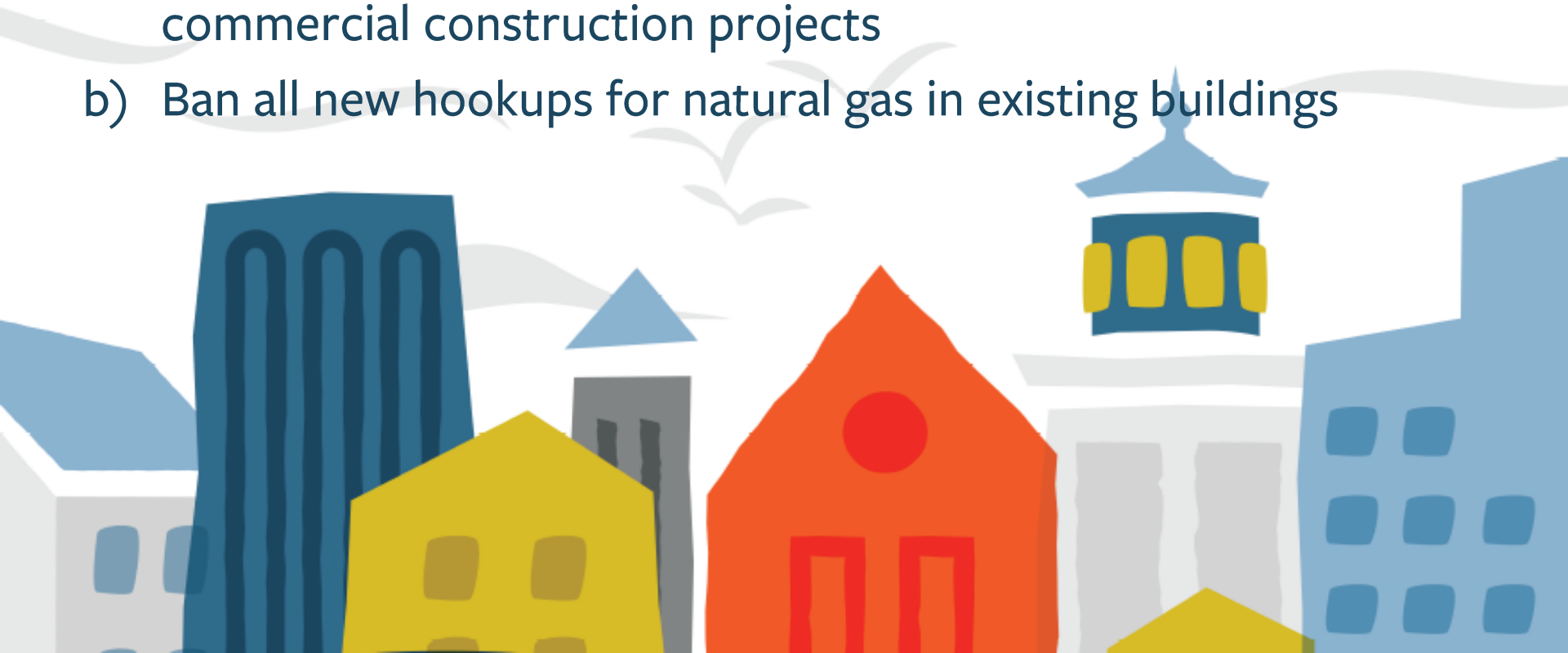




# Buildings and Energy

In order to meet our greenhouse gas emissions targets, homes and businesses will need to switch to electric and/or renewable heating sources by 2050. How do you feel about the following policy approaches?

- a) Ban hookups for natural gas in new residential and commercial construction projects
- b) Ban all new hookups for natural gas in existing buildings



# Buildings and Energy

To help meet our climate goals, Portland and South Portland should require commercial and residential property owners using fuel oil or natural gas to install electric heating and cooling systems when it is time to install a new system.

- a) Agree
- b) Disagree



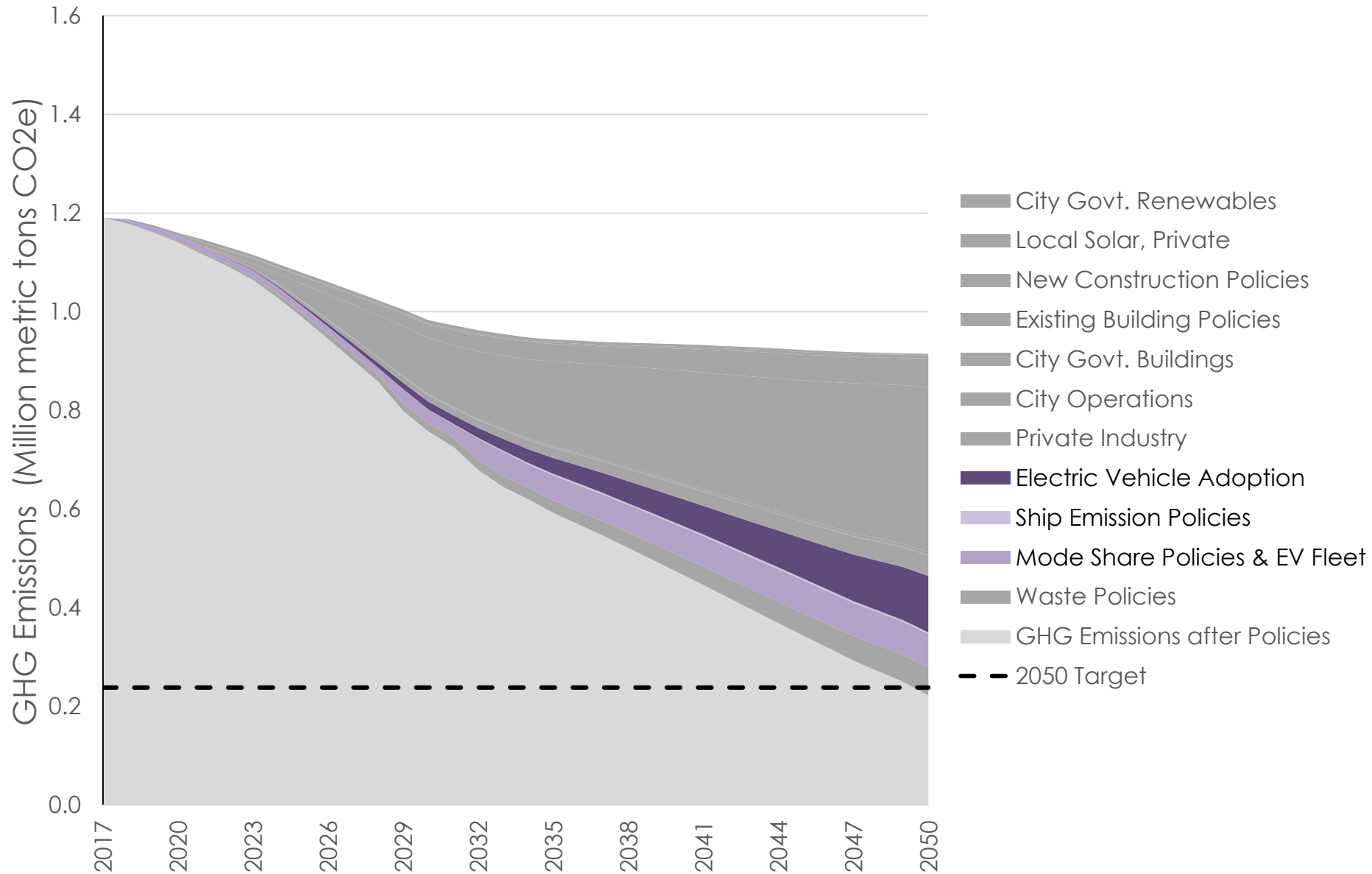


# Transportation and Land Use

Goal: Design and connect our homes, businesses, and public spaces around an efficient transportation network.



# Transportation and Land Use



# Transportation and Land Use

Portland and South Portland should reduce traffic congestion in certain areas by charging more to park in popular areas or by creating car free zones.

- a) Agree
- b) Disagree

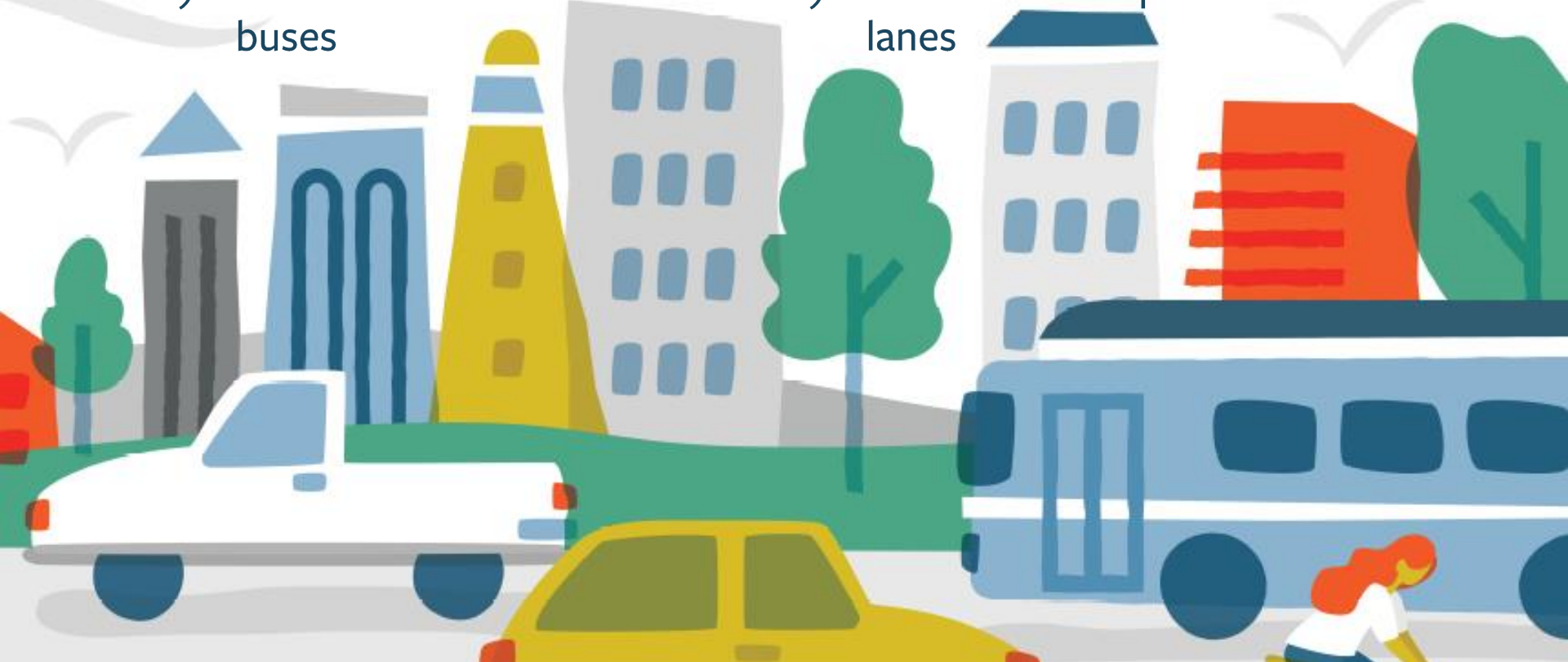




# Transportation and Land Use

Please rank how you feel Portland and South Portland should invest money to reduce dependency on private vehicle use:

- a) Reduce wait times and frequency of bus service
- b) Create dedicated lanes for buses
- c) Improve sidewalks and pedestrian crossings
- d) Create more separated bike lanes

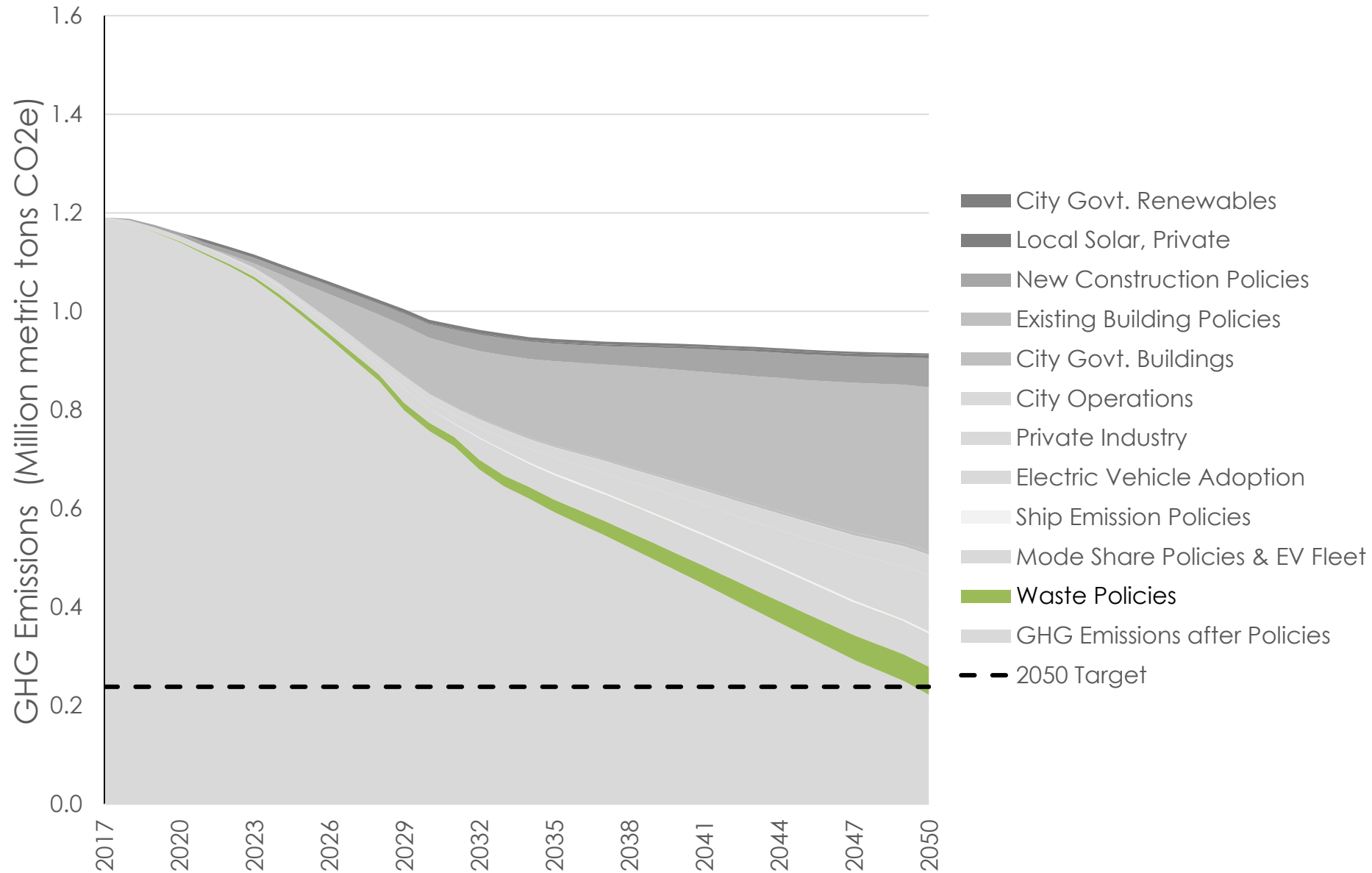


# Waste Reduction

**Goal:** Minimize waste by changing how our community consumes and disposes of goods and materials.



# Waste Reduction





# Waste Reduction

To keep food scraps out of the waste stream, the cities should **require** residents and businesses to participate in a food waste composting program. Do you...

- a) Agree
- b) Disagree



# Waste Reduction

To keep food scraps out of the waste stream, the cities should **require** residents and businesses to participate in a food waste composting program. Do you...

- a) Agree
- b) Disagree



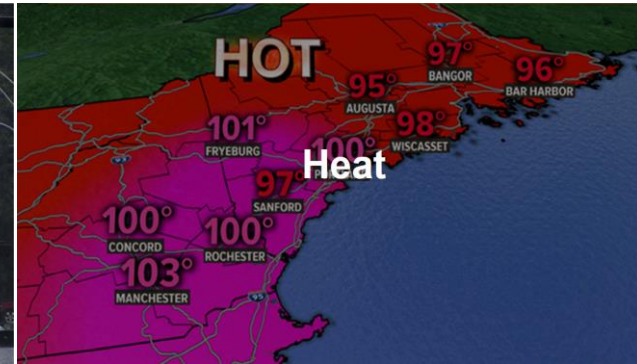
# Climate Resilience

**Goal:** Ensure all our neighborhoods can withstand, respond to, and recover from natural disasters.





# Climate Resilience



# Climate Resilience

Portland and South Portland should prevent displacement and ensure access to housing for all residents by:

- a) Prioritizing denser housing patterns, particularly in mixed-use districts with businesses, services, and public transit
- b) Eliminating single-family zoning districts that can result in exclusion of alternative housing solutions



# Climate Resilience

Portland and South Portland should encourage construction of denser and more diverse housing on public transportation routes so more people have access to resources and jobs without a car.

- a) Agree
- b) Disagree







Fill in the blank: In order for One Climate Future to be successful it must \_\_\_\_\_.



**Complete and share Survey #3 online:**  
<https://www.surveymonkey.com/r/OneClimateFuture>