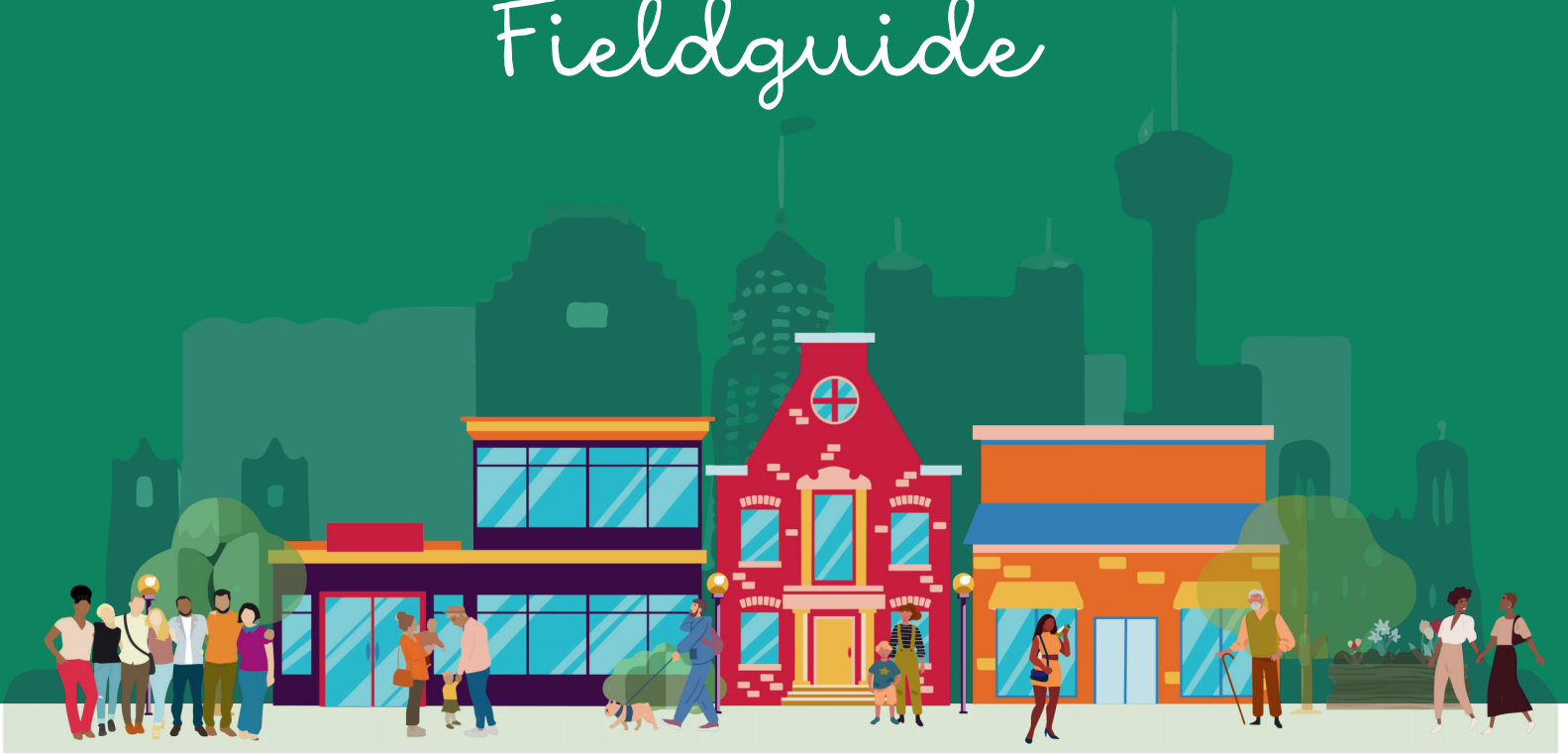


SAN ANTONIO'S
**CLIMATE READY
NEIGHBORHOODS**
Fieldguide



A guide for how to join the movement of community-based organizations increasing climate resilience in neighborhoods across San Antonio



SUSTAINABILITY

SAN ANTONIO'S CLIMATE READY NEIGHBORHOODS



Across San Antonio, we see the effects of a changing climate combined with historic inequities impacting our neighbors — in moments of extreme weather and in the everyday. We have an opportunity to increase our resilience to weather the storms of life, **together.**

Climate Ready Neighborhoods is a network of community partners linking climate-resilience information, trainings, resources, and funding through a network of trusted community groups and spaces called Neighborhood PODs.

THE MISSION

With equitable access for all, Climate Ready Neighborhoods connects Neighborhood PODs through Information, Resources and Partnership to increase climate resilience before, during and after the storms of life.

**INFORMATION
& EDUCATION**

**CONNECTED
PARTNERSHIPS**

**RESOURCES
& FUNDING**

The concepts of Climate Ready Neighborhoods are adapted from Resilience Hubs developed by USDN: Urban Sustainability Directors Network. www.resilience-hub.org

WHAT IS A NEIGHBORHOOD POD?

Neighborhood PODs are community-led spaces that connect neighbors to resources and services to build climate readiness and cultivate relationships in the communities they serve.

Any community organization or team of neighbors can follow the fieldguide to become a designated Neighborhood POD. Climate Ready Neighborhoods provides resources to help your neighborhood team become the type of POD that is right for you.

Climate Ready NEIGHBORHOOD POD

POINT OF DISTRIBUTION

Climate Ready Neighborhoods is a network here to support community-based organizations who in turn support their community as Neighborhood PODs. Whether you are a Neighborhood Association, a community-minded business, a House of Worship, a nonprofit or any other type of involved and committed neighbor — This process is built for you to find the right fit to **Build Climate Resilience and Increase Equity and Access to Resources alongside Neighbors in your Community.**

On the following pages, your project team will be able to review the 3 Types of PODs and the Core Criteria for each and choose the right fit for your neighborhood, your facility, your team and your time. Climate Ready Neighborhoods is here to support your growth into the Type of POD you choose. We offer a Toolkit to help you set project goals, trainings, an ever-growing Resource Library provided by partnering organizations, and funding opportunities to develop and implement your goals.

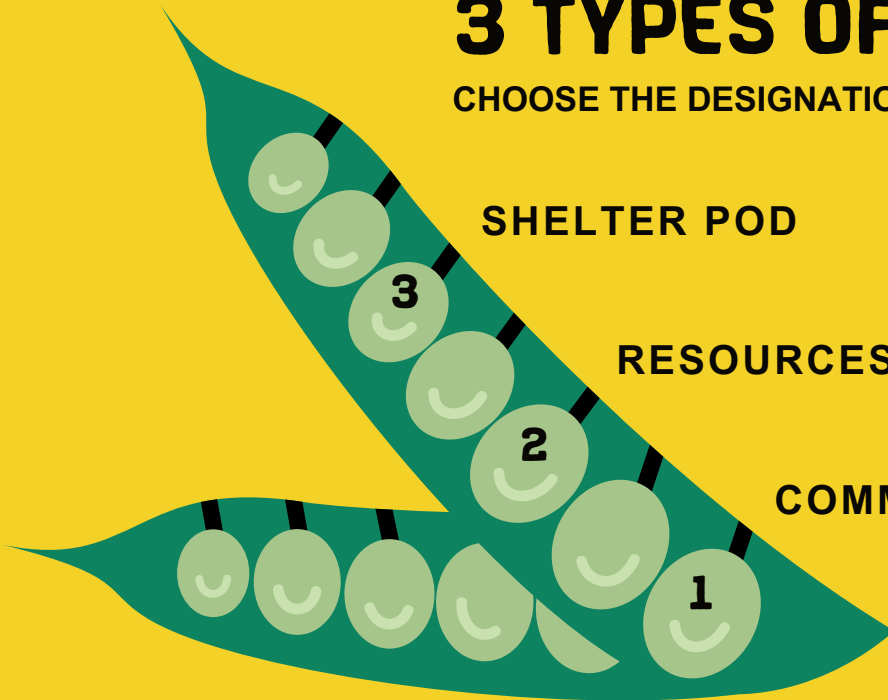
3 TYPES OF PODS

CHOOSE THE DESIGNATION THAT FITS FOR YOU

SHELTER POD

RESOURCES POD

COMMUNICATION POD



Become the Type of
Neighborhood POD that fits for you!

3 TYPES OF PODS

COMMUNICATIONS POD

Bring community members together to receive and/or share information, education and trainings to increase climate readiness. This POD does not have to be in a building!

SHELTER POD

Provide services for community members before, during and after emergencies such as extreme weather.

RESOURCE POD

Connect community members to resources, materials, information, and services to increase climate readiness.



PROGRAM GOALS

To increase climate readiness and community resilience in neighborhoods throughout San Antonio by:

BUILDING CAPACITY

Building capacity for community-based organizations and/or neighborhood groups to serve as Neighborhood PODs for their surrounding community.

INCLUSIVITY & EQUITY

Meaningfully involve underserved communities, diverse groups or vulnerable populations

DEVELOP PROJECTS

Develop climate readiness projects in one or more of the 5 Resilience Areas:

- Programs & Services
- Buildings & Landscape
- Communications
- Power
- Operations

OPERATING MODES

Develop projects across 3 Preparedness Modes:



The following pages of the Fieldguide will share more about
Climate Ready Neighborhoods and how the network, program
can support your work in your community.

Continue growing as a Neighborhood POD!

Climate Ready Neighborhoods has resources, trainings and grants here when you need them — You can even start the cycle again to grow your POD.

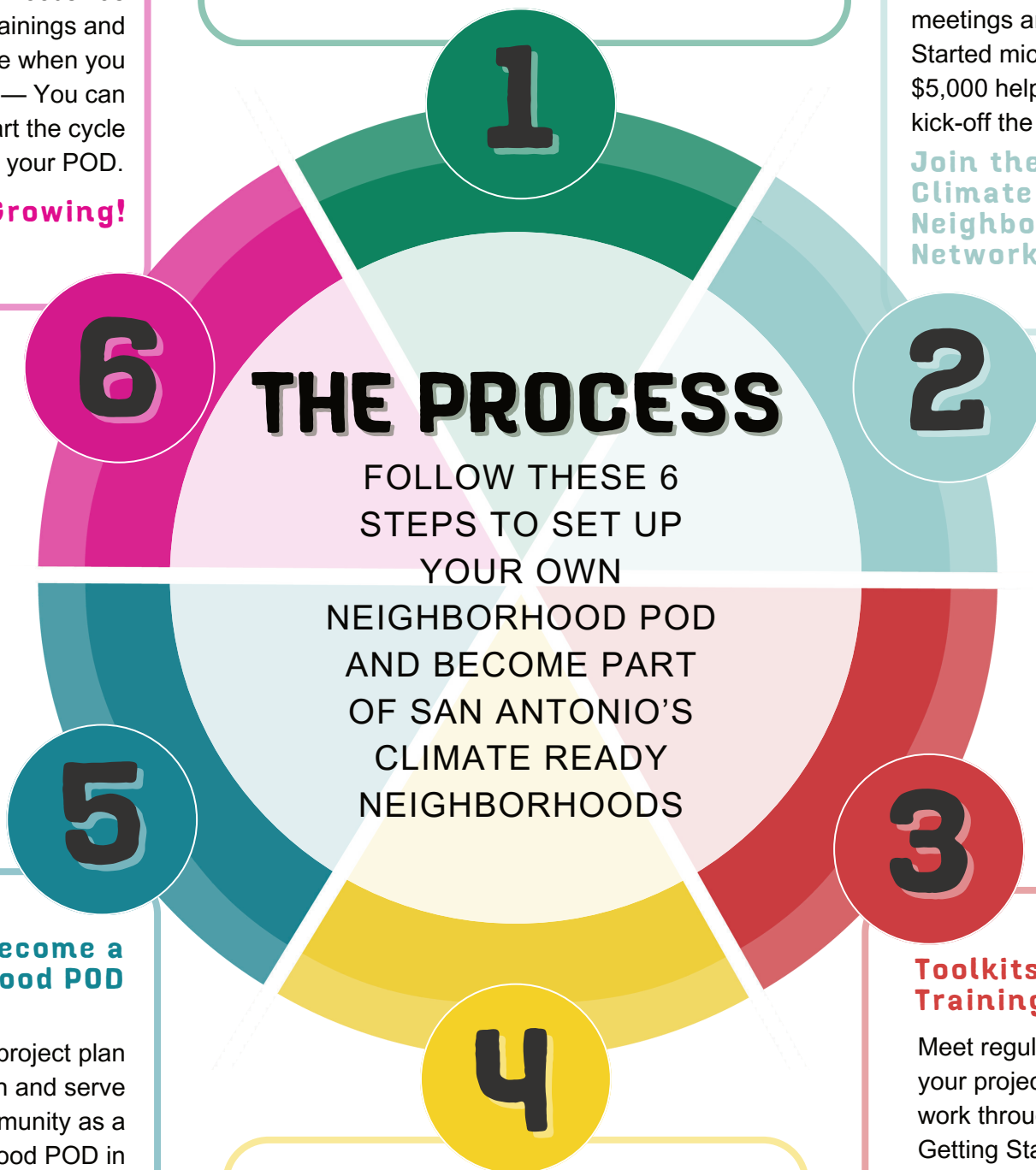
Keep Growing!

Work through the Climate Ready Neighborhoods Fieldguide to assemble your neighborhood team, review the Types of PODs and criteria for each. As a team, decide which Type of POD is right for you.

Assemble Your Team

Submit the interest form to join Climate Ready Neighborhoods. Monthly network meetings and Getting Started micro-grants of \$5,000 help teams kick-off the process.

Join the Climate Ready Neighborhoods Network



Apply for Climate Ready Neighborhoods Project Grant

Climate Ready Neighborhoods project grants of up to \$20,000 are here to help your team achieve project goals to become and/or grow as a Neighborhood POD. The Toolkit will help your team be ready to apply!

Toolkits & Trainings

Meet regularly with your project team to work through the Getting Started Toolkit to evaluate your current situation and set project goals to meet the Criteria for your chosen Type of POD. Complete trainings offered by Network partners.

Become a Neighborhood POD

Put your project plan into motion and serve your community as a Neighborhood POD in the everyday and moments of disruption and recovery with the continued support of Climate Ready Neighborhoods.

Climate Ready RESILIENCE BADGES

Every neighborhood is diverse in its people, culture, buildings, businesses, strengths and vulnerabilities. For this reason, Neighborhood PODs are co-created with the communities they serve and grow into equally as diverse centers of community life.

Resilience Badges are a colorful way to showcase what you do and who you serve. Over time, your Neighborhood POD can assemble the collection of Resilience Badges that best serve your neighborhood and communicate them PROUDLY on your window, website, or wherever to increase Climate Readiness for ALL community members.



Strengthening resilience of facilities in all conditions and investing into elements that support healthy natural ecosystems



Community-oriented programs & services that build relationships, promote preparedness, and improve health and well-being



Ensuring the ability to communicate within and outside your neighborhood in all conditions



Reliable backup power to facilities during a hazard while also improving the cost-effectiveness and sustainability of operations



Ensuring personnel and processes are in place to operate the facility in everyday, disruption and recovery

THREE OPERATING MODES

As a Neighborhood POD, you are working to build resilience capacity to serve your community in three operating conditions. The term resilience is often used interchangeably with emergency preparedness and response, but these elements only address part of this important concept.



EVERYDAY



A local church operates a weekly soup kitchen out of its commercial kitchen as well as culturally relevant family cooking classes monthly.

When Neighborhood PODs operate in **EVERYDAY** or “Blue Skies” mode, they acts as a focal point for the community: *improving year-round conditions and the necessary tools and resources to enhance day-to-day life.*


They build equity through inclusive programming & communications that prioritizing historically marginalized communities.

Neighborhood PODs also act as centers for **preparedness, and disaster response**. Disruption can take many forms; natural disasters such as a heat wave, flood, wildfire, pandemic.

In the event of a disruption, PODs *respond and enhance operations to better support immediate community needs*, reducing the need of emergency services and connecting neighbors with supplies, information and support.




DISRUPTION



In the midst of a winter freeze, the church calls on volunteers to cook and distribute warm meals to elderly or vulnerable neighbors at their homes.



RECOVERY



After the freeze, the church hosts a local flood insurance company, who can guide residents through reporting and repairing freeze damage.

Neighborhood PODs are centers for resource deliveries and distribution, access to support and assistance, and locations to access trauma support services.

PODs can also serve as central locations for external partners to **gather and support recovery services** such as conducting needs assessments, damage assessments, and interviews with residents.

Neighborhood POD PREREQUISITES

This is your starting place. Use this list of Prerequisites to check the baseline criteria.

 **YES, WE CURRENTLY HAVE** |  **NEED RESOURCES TO DEVELOP** |  **NO, NOT INTERESTED/ABLE**

1 TRUSTED & READY TO SERVE THE COMMUNITY

Open and welcoming to all community members. Ready to answer the call to build community resilience by developing the capacity to offer services, programming, and/or facilities in the everyday, emergencies, and recovery.

2 NEIGHBORHOOD TEAM

Assembling a Team to meet regularly to go through the Climate Ready Neighborhoods Toolkit to set project goals toward becoming a POD. Teams will have a designated point of contact for CRN (plus an alternate). Use the Build Your Team (pg.18) to identify team members.

3 NETWORK MEETINGS: BI-MONTHLY

Climate Ready Neighborhoods hosts monthly meetings that bring together neighborhood teams with partnering organizations for trainings, resource sharing, and coaching. As a part of the CRN program, your team commits that at least 1 team member will attend each bi-monthly meeting.

Criteria 4 & 5 are applicable only if your Neighborhood POD is site-specific.

4 APPROVAL BY BUILDING OWNER AND OPERATOR*

Facility owner and operator approval (in writing) to join the Climate Ready Neighborhoods network and pursue Neighborhood POD designation. Signers should be those with ability to sign-off on facility improvements.

5 BASIC FACILITY SERVICES*

Facilities meet the basic requirements to be open and host the public as designated by a current Certificate of Occupancy.

 **YOU ARE READY TO MOVE FORWARD!**

ON THE NEXT PAGES REVIEW THE TYPES OF PODS & THEIR CRITERIA AS A TEAM, DETERMINE THE ONE THAT IS RIGHT FOR YOU AND IDENTIFY WHERE YOU NEED RESOURCES TO DEVELOP.

COMMUNICATIONS POD

Core Criteria

Communications PODs bring community members together to receive and/or share information, education and trainings to increase climate readiness. Communications PODS are prepared to disseminate information in moments of disruption and recovery as well as the everyday.

As a team, evaluate your potential COMMUNICATIONS POD according to the following criteria:



YES, WE CURRENTLY HAVE



NEED RESOURCES TO DEVELOP



NO, NOT INTERESTED/ABLE

PROGRAMS AND SERVICES



Community-informed programming in response to neighborhood assets and vulnerabilities



Equity-based programming that centers historically marginalized communities such as seniors, those living with disabilities, BIPOC, LGBTQ+, unhoused neighbors and others

BUILDING AND LANDSCAPES



Publicly accessible restrooms on site*



Reliable HVAC system appropriate for space*



Accessibility ramps and accommodations throughout/ADA Compliant*

COMMUNICATIONS



Bulletin board/resource sharing space; Digital and in-person plan to span digital divide



Information Pamphlets: Preparedness Info, Hazard Info, Recovery Resources, etc.



Alert systems



Translation Services: ASL, multilingual information is accessible as needed



Communications Plan that prioritizes accessible information to surrounding community and how to get in touch with CRN Network and City for coordination in all 3 modes



Free wi-fi and/or access to computers*

Communications PODs do not require a facility.

10 Criteria with * apply only to facility-based Communication PODs

COMMUNICATIONS POD

Core Criteria

POWER



Reliable power system appropriate for space*



OPERATIONS



Plan for training volunteers and/or staff to support operations



Plan for developing relationships with the surrounding community



CERT 11 Training (Recommended)



RESOURCE POD

Core Criteria

Resource PODs connect community members to resources, materials, information, and services to increase climate readiness. They are based at a trusted location and consider the following criteria across all 3 modes: Everyday, Disruption and Recovery

As a team, evaluate your potential RESOURCE POD according to the following criteria:



YES, WE CURRENTLY HAVE



NEED RESOURCES TO DEVELOP



NO, NOT INTERESTED/ABLE

PROGRAMS AND SERVICES



Community-informed programming in response to neighborhood assets and vulnerabilities



Equity-based programming that centers historically marginalized communities such as seniors, those living with disabilities, BIPOC, LGBTQ+, unhoused neighbors and others



Supply Distribution process (such as food, water, medicine, other supplies)

Your Resource POD will have a variety of programs and services unique to your neighborhood. You will have a chance to evaluate and determine what these are in the next phase of the Climate Ready Neighborhoods program.

BUILDING AND LANDSCAPES



Publicly accessible restrooms on site



Reliable HVAC system appropriate for space



Accessibility ramps and accommodations throughout/ADA Compliant



Certificate of Occupancy (or equivalent)



Food and Water Storage



Community gathering and/or supply distribution space



Stormwater/Flood Mitigation & Hazard Risk Assessment



Facility specific maintenance and future proofing to mitigate for hazards



Accessibility via access to public transit and/or multimodal transportation options (within .25 mile) (Recommended)

RESOURCE POD

Core Criteria



COMMUNICATIONS

- ☒ ☐ ☒ Bulletin board/resource sharing space; Digital and in-person plan to span digital divide
- ☒ ☐ ☒ Information Pamphlets: Preparedness Info, Hazard Info, Recovery Resources, etc.
- ☒ ☐ ☒ Translation Services: ASL, multilingual information is accessible as needed
- ☒ ☐ ☒ Alert systems
- ☒ ☐ ☒ Communications Plan that prioritizes accessible information to surrounding community and how to get in touch with CRN Network and City for coordination in all 3 modes
- ☒ ☐ ☒ Free wi-fi and/or access to computers
- ☒ ☐ ☒ Charging stations for mobile/communications devices

POWER



- ☒ ☐ ☒ Reliable power system appropriate for space

OPERATIONS



- ☒ ☐ ☒ Plan for training volunteers and/or staff to support operations
- ☒ ☐ ☒ Plan for developing relationships with the surrounding community
- ☒ ☐ ☒ Clearly communicated operational hours; Designation of transitions between the 3 modes
- ☒ ☐ ☒ Check-in/sign-in and safety protocols
- ☒ ☐ ☒ Mutual aid system to provide support, safety, and care (Recommended)
- ☒ ☐ ☒ Financially sustainable model to support ongoing operations (Recommended)
- ☒ ☐ ☒ CERT 11 Training (Recommended)
- ☒ ☐ ☒ Trauma-informed; Mental Health Training for volunteers/staff (Recommended)
- ☒ ☐ ☒ Continuity of Operations Plan including Volunteer Activation Protocols (Recommended)

SHELTER POD

Core Criteria

Shelter PODs are trusted spaces that provide services for community members before, during and after emergencies such as extreme weather. IE: Warming/Cooling Centers, Overnight or Evacuation Shelters

Shelter PODs meet the Core Criteria for Communication and Resource PODs on the previous pages, plus the following. As a team, evaluate your potential SHELTER POD according to the following criteria:



YES, WE CURRENTLY HAVE



NEED RESOURCES TO DEVELOP



NO, NOT INTERESTED/ABLE

PROGRAMS AND SERVICES



Food and Water Distribution



Access to basic health and medical supplies



Supply Distribution Processes



Community-informed programming in response to neighborhood assets and vulnerabilities



Equity-based programming that centers historically marginalized communities such as seniors, those living with disabilities, BIPOC, LGBTQ+, unhoused neighbors and others

Your Shelter POD will have a variety of programs and services unique to your neighborhood. You will have a chance to evaluate and determine what these are in the next phase of the Climate Ready Neighborhoods program.

BUILDING AND LANDSCAPES



Publicly accessible restrooms on site



Reliable HVAC system appropriate for space



Accessibility ramps and accommodations throughout/ADA Compliant



Certificate of Occupancy (or equivalent)



Food and Water Storage



Ability to be well insulated and weatherized



Community gathering and/or supply distribution space



Stormwater/Flood Mitigation & Hazard Risk Assessment



Facility specific maintenance and future proofing to mitigate for hazards



Refrigeration and cool/dry storage for medication

SHELTER POD

Core Criteria



BUILDING AND LANDSCAPES CONTINUED



Space for overnight sleeping and shelter beds (Recommended)



Commercial Kitchen (Recommended)



Redundant Water Supply (Recommended)



Accessibility via access to public transit and/or multimodal transportation options (within .25 mile) (Recommended)

COMMUNICATIONS



Bulletin board/resource sharing space; Digital and in-person plan to span digital divide



Information Pamphlets: Preparedness Info, Hazard Info, Recovery Resources, etc.



Translation Services: ASL, multilingual information is accessible as needed



Alert systems



Communications Plan that prioritizes accessible information to surrounding community and how to get in touch with CRN Network and City for coordination in all 3 modes



Free wi-fi and/or access to computers



Charging stations for mobile/communications devices



Emergency Radio (Recommended)

POWER



Reliable power system appropriate for space



Solar power and batter backup (Recommended)

SHELTER POD

Core Criteria



OPERATIONS

- | | | | |
|--|--|--|--|
| | | | Plan for training volunteers and/or staff to support operations |
| | | | Plan for developing relationships with the surrounding community |
| | | | Clearly communicated operational hours; Designation of transitions between the 3 modes |
| | | | Capacity for extended hours (overnight or multiple days) during disruption (Recommended) |
| | | | Check-in/sign-in and safety protocols |
| | | | Continuity of Operations Plan including Volunteer Activation Protocols |
| | | | Mutual aid system to provide support, safety, and care (Recommended) |
| | | | Financially sustainable model to support ongoing operations (Recommended) |
| | | | Trauma-informed; Mental Health Training for volunteers/staff (Recommended) |
| | | | Community Emergency Response Team Training and CERT 11 Training (Recommended) |

NOTES

BUILD YOUR TEAM

Your Neighborhood Team will go through the Climate Ready Neighborhoods Program together. Use the space below to brainstorm core team members and other partners/collaborators. Consider a variety of skillsets, knowledge and lived experience in order to create a Neighborhood POD that will best serve your entire community.

NEIGHBORHOOD TEAM

NAME	CONTRIBUTION/SKILLSET	NAME	CONTRIBUTION/SKILLSET
1		5	
2		6	
3		7	
4		8	

*We recommend 3-8 team members. On the next page you will designate a Main & Secondary Point of Contact.

ADDITIONAL PARTNERS/COLLABORATORS:

Who are other people/organizations that may not be on the core team but will be important to be a part of your Neighborhood POD? Climate Ready Neighborhoods also has key partnering organizations to help with trainings and programs.

WHEN, WHERE, HOW?

What communication channels will you use? When, where, and at what frequency will you meet? How will you hold one another accountable to action items? Outlining this now helps everyone know what they are committing to.

OUR ACTION STEPS

OUR PROJECT TEAM

From your project team,
who will be:

MAIN POINT
OF CONTACT

SECONDARY
CONTACT

IDENTIFY A TRUSTED SPACE

Will your POD be located in a trusted physical space?

☐ YES, NAME OF SPACE:

☐ NO, NOT IN
A SPACE

Are they on board? ☐ Yes ☐ Need to reach out ☐ Need to brainstorm

POD TYPE

Which type of POD are you interested in becoming?

☐ COMMUNICATION POD ☐ RESOURCE POD ☐ SHELTER POD

PROJECT IDEAS

As your team reviewed the POD Criteria, you began identifying areas you'd

➔ "Like to Develop". Revisit these.

What are the TOP 3 Criteria your team is interested in developing?

➔ TOP 3 CRITERIA TO DEVELOP

WHAT ARE YOUR 1ST STEPS IN MAKING THIS HAPPEN?

These are just initial ideas! It's ok if they change as you go through Climate Ready Neighborhoods.



WHAT'S NEXT? INTEREST FORM

Climate Ready Neighborhoods offers a program to help your team pursue your POD designation by building your project idea, your team's capacity, and the funding to do-so. Scan the QR code and fill out the interest form to join the network!

Questions? Email Sustainability@sanantonio.gov

RESILIENCE

BIODIVERSITY THRIVING GARDEN
TRUST MUTUAL-AID PUBLIC TRANSPORT
HEAT RESISTANT GREEN SPACES
PLAYGROUND WATER POC
WALKABILITY ANIMAL SAFETY
ELECTRICITY OWNERSHIP
DRAINAGE UNITY FOOD PANTRY
INCLUSIVE EXERCISE VIBRANT
EDUCATION SOLAR EMPOWERMENT
TREE CANOPY SECURE DOOR-TO-DOOR
ACCESSIBILITY FOOD ACCESS
INFORMED COMMUNICATION CHOICES
PRO-ACTIVE RENEWABLE ENERGY

THANK YOU TO THE COMMUNITY MEMBERS
WHO BRAINSTORMED THESE IDEAS!

WHO?
cares!
WE ALL SHOULD.