

SAN ANTONIO'S
**CLIMATE READY
NEIGHBORHOODS**
Toolkit



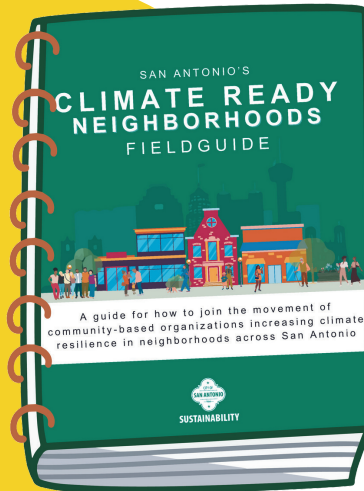
MODULE ONE



SUSTAINABILITY

SAN ANTONIO'S CLIMATE READY NEIGHBORHOODS

Make sure you have your Fieldguide handy for reference. The Fieldguide provides framing for concepts introduced in the three Modules.



**How might we
increase climate
readiness and
community
resilience in our
neighborhood?**

Module One helps your POD understand *your neighborhood, POD type, and local climate*, preparing you for the Microgrant and experimental projects. The following pages include exercises to assess your current capacity and define learning goals and community outcomes to build climate readiness.

PROGRAM GOALS

To increase climate readiness and community resilience in neighborhoods throughout San Antonio by:

BUILDING CAPACITY

Building capacity for community-based organizations and/or neighborhood groups to serve as Neighborhood PODs for their surrounding community

INCLUSIVITY & EQUITY

Meaningfully involve underserved communities, diverse groups or vulnerable populations

DEVELOP PROJECTS

Develop climate readiness projects in one or more of the 5 Resilience Areas:

- Programs & Services
- Buildings & Landscape
- Communications
- Power
- Operations

OPERATING MODES

Develop projects across 3 Preparedness Modes:



TABLE OF CONTENTS

what is **YOUR NEIGHBORHOOD?**

4 WHO YOU ARE

6 ASSETS & VULNERABILITIES

what is **COMMUNITY RESILIENCE?**

8 YOUR RESILIENCE

9 STRENGTHS & WEAKNESSES

what is **CLIMATE READINESS & EQUITY?**

10 YOUR EQUITY

11 SAN ANTONIO CLIMATE

what is **YOUR PROJECT?**

12 BRAINSTORMING

14 NARROWING YOUR IDEA

15 PROJECT PLAN

16 MICROGRANT APPLICATION
LINK

GET TO KNOW YOUR NEIGHBORHOOD

- Social Media
- Local Events
- Radio Stations
- Word of Mouth
- Community Websites
- Local Newsletters
- Community Bulletin Boards

Where do people exchange information in the community. Circle all that apply or add your own!



AGE DISTRIBUTION



Who are the people of your community/neighborhood?

RACE/ETHNICITY

LANGUAGES

Where do people engage socially and gather together?



During times of need, where would people be most comfortable or likely to go?

What is special about your community/neighbors?



START HERE

What physical areas or boundaries define your community and neighborhood?

How do community members typically receive important news, updates and announcements?

News Outlets

Local Government

Community Leaders



Equity Atlas: Use this to find specific demographic data on your neighborhood.

EQUITY

INCOME

EMPLOYMENT

NEWS

Libraries

Parks

Non-Profits

Recreation Centers

Healthcare Facilities

What public services exist? Circle all that apply or add your own!

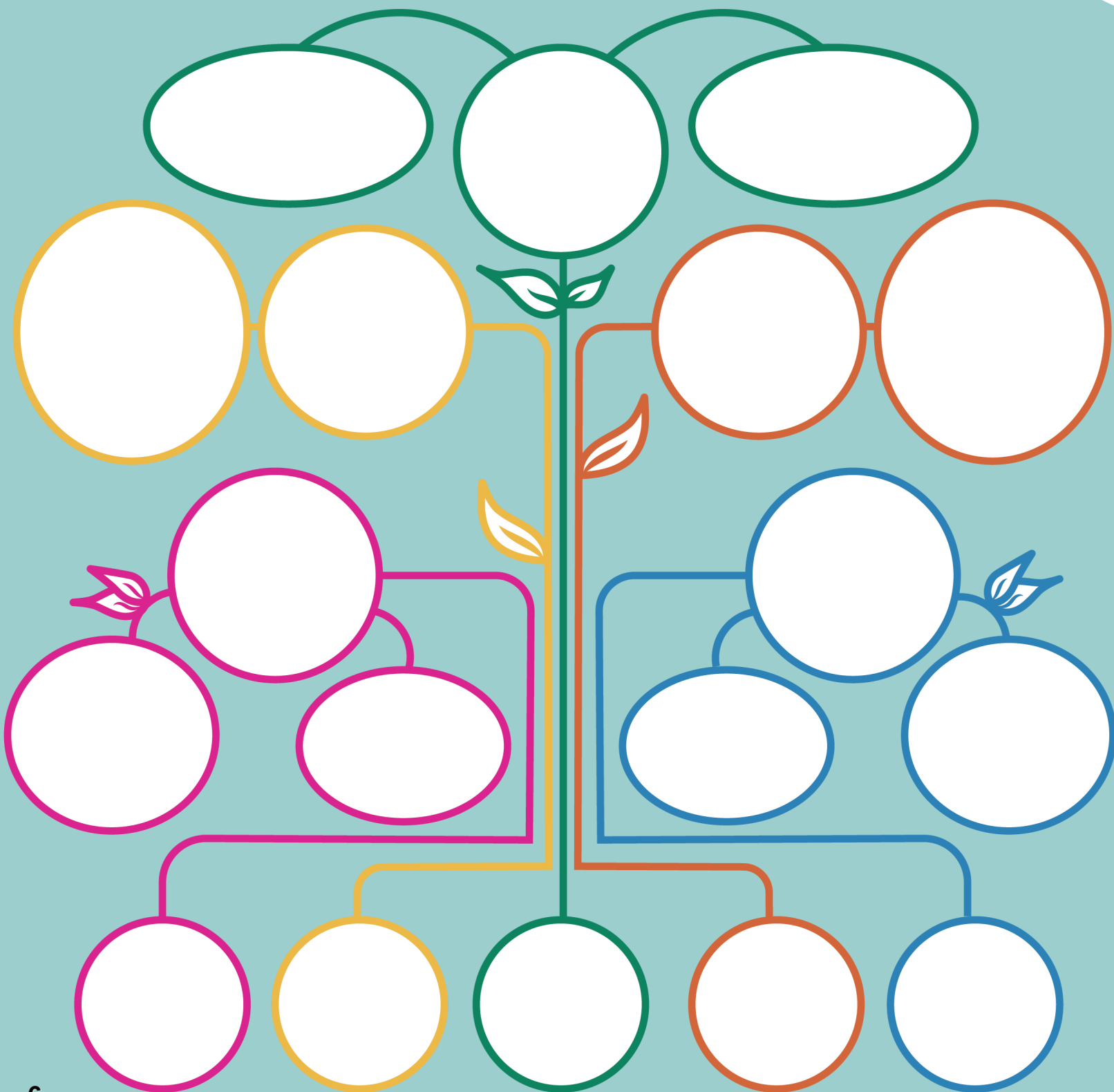
What infrastructure exists?

ASSET MAPPING *IDENTIFYING RESOURCES*

Create a map of the assets — the resources — in your neighborhood that could support your Neighborhood POD. Be specific! A community asset or resource is anything that improves the quality of life in your area and can help you build community resilience and climate readiness. The guiding questions are here to spark your creativity.

Guiding questions:

- What are the gifts, talents, and skills of your project team?
- What are the trusted space(s) that your team has access to? Property/land?
- What knowledge and expertise exists among your community? Cultural resources?
- What partnerships or relationships are a resource in your community?



VULNERABILITIES

In this exercise, you will explore various factors to uncover vulnerable populations or systems in your neighborhood. As you progress on your road to climate resilience, read the questions and jot down your answers along the path.

MOBILITY

What assets are walkable? How many residents have access to vehicles and transit options that are reliable to use to evacuate?

EMERGENCY SERVICES

How many residents have an emergency plan, shelter in place materials, and a go bag? Are there community shelters or emergency first responders?

COMMUNICATIONS

Do you have socially isolated people or people living alone who don't have access to a personal network? What languages do communications need to be in? Do you have an elder generation that is not plugged into the tech world?

FOOD SECURITY

How close is the nearest grocery store? Do residents they have 72 hours of food and water stored at home? Access to affordable, nutritious food?

HEALTH

What health conditions are prevalent in your community? How many residents use medications or medical equipment that require electricity?

COMMUNITY CULTURE

Does local culture prepare for disruption? What cultural practices will residents want to continue during disruption? (ie. worship, diet?)

UTILITIES

How many households have had utility shut-offs in the last 12 months? How many residents and businesses are prepared to go without utilities for 72 hours? How long do repairs take?

INCOME & EMPLOYMENT

Do neighbors have resources to prepare for/recover from climate disruptions? Are housing conditions livable?

CRITICAL FACILITIES

What services does your community lack in times of disruption? How accessible are critical services like food, health care, emergency response?

GOVERNANCE

Is there trust in city government? Are decision-makers in meaningful relationship with community members?

what is **COMMUNITY RESILIENCE?**

Now that you've learned more about your neighborhood, we are going to dive deeper into what community resilience is.

The USDN defines RESILIENCE as “the ability of people and their communities to anticipate, accommodate and positively adapt to or thrive amidst changing climate conditions and hazard events.”

Resilience encompasses more than just preparedness and crisis response; it involves a community's access to critical resources, green spaces, quality education, public safety initiatives, and the preservation of cultural traditions. Rather than focusing solely on disruptions, we take a holistic approach to resilience, prioritizing daily community needs, empowering neighborhoods and residents, addressing root causes of climate impact vulnerabilities, and enhancing communities' adaptive capacity for long-term thriving.

Share ways in which you've seen community resilience
in your neighborhood or places you've been inspired by.

Community Resilience is...

Community Resilience is...

Community Resilience is...

Community Resilience is...

Community Resilience is...

Community Resilience is...

DREAM BIG!

In 5 years, what does community resilience look like
in your neighborhood? Write or draw your vision.

**FOLLOW
THE QR
CODE TO
SEE
EXAMPLES
OF
RESILIENCE
IN ACTION**



RESILIENCE BADGES

Go through each of the 5 resilience areas and brainstorm one strength and one vulnerability of your neighborhood. Remember, you already reviewed each category in the criteria pages in the Fieldguide (pages 10-16). Consider adding those "Need Resources to Develop" categories in your vulnerability section.



Strengthening resilience of facilities in all conditions and investing into elements that support healthy natural ecosystems

STRENGTH

VULNERABILITY

Community-oriented programs & services that build relationships, promote preparedness, and improve health and well-being

STRENGTH

VULNERABILITY



Reliable backup power to facilities during a hazard while also improving the cost-effectiveness and sustainability of operations

STRENGTH

VULNERABILITY

Ensuring personnel and processes are in place to operate the facility in everyday, disruption and recovery

STRENGTH

VULNERABILITY

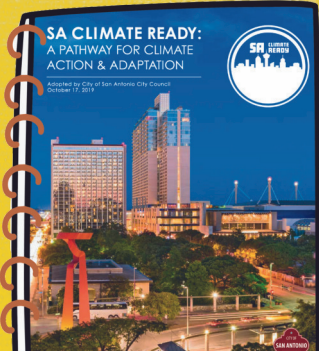


Ensuring the ability to communicate within and outside your neighborhood in all conditions

STRENGTH

VULNERABILITY

what is **CLIMATE READINESS**?



SA Climate Ready is San Antonio's plan to tackle the present and future challenges of a changing climate, building on the steps we've already taken towards a low-carbon future. **This plan includes strategies for both prevention and adaptation, aiming to meet the needs of all residents while strengthening our city's resilience.**

Climate Ready Neighborhoods is the Office of Sustainability's program that brings climate readiness and resilience to the forefront of community connection. We prioritize using existing community networks and offering support to build capacity for a future where we're all better prepared for climate disruptions.

 Learn more about
SA's Climate Ready
Action Plan

what is **CLIMATE EQUITY**?

Climate equity ensures that everyone has equal access to the resources and opportunities necessary to adapt to and prevent climate impacts. It highlights the importance of addressing the disproportionate effects of climate change on marginalized and vulnerable communities. These groups face higher climate risks due to various factors influencing a community's and an individual's sensitivity to climate impacts and their ability to adapt. For instance, outdoor workers and individuals with pre-existing health conditions are more vulnerable to heat events, and people with lower incomes often have fewer resources to repair flood damage and may live in substandard housing.

By identifying and addressing the underlying causes of disproportionate climate risk, Pods can effectively support community preparedness while also promoting racial and social justice.

We encourage you to learn more about your community's vulnerable populations and seek additional information on building an equitable climate project.

RESOURCES TO...

kickstart adding a racial equity lens to your sustainability project. Scan the QR code and find:

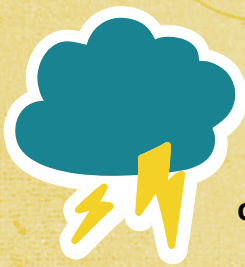


- USDN Equity Foundations Training
- Guide to Equitable, Community-Driven Climate Preparedness Planning

What are the primary vulnerabilities in your community? (e.g., economic instability, health risks, food insecurity)

Which specific groups are most affected (e.g., elderly, disabled, low-income families, people living alone)?

How can you find more data on the most underserved or vulnerable populations?



SAN ANTONIO'S DISRUPTIONS

Consider the current events and trends in San Antonio's weather. What hazards have you observed affecting our area? **Hazards are defined as natural or human-made events or conditions that have the potential to cause harm or adverse effects on people, property, infrastructure, economies, and natural environments.** Circle the hazards below.

**FLOODING**

**EXTREME HEAT**

**HAIL**

**WILDFIRE**

**LIGHTNING**

**TORNADO**

**DAM FAILURE**

**DROUGHT**

**SEVERE WINDS**

**HAZARDOUS MATERIALS**

**WINTER STORM**

**CYBER SECURITY**

**PIPELINE FAILURE**

**TERRORISM**

**POWER OUTAGE**

**PUBLIC GATHERINGS**

**EXPANSIVE SOILS**

**PANDEMIC, HEALTH**



SA
HEAT
MAP



Vulnerability
& Risk
Assessment

OTHERS:

Among the disruptions you circled above, which three affect your community or neighborhood the most, or which ones are you interested in learning more about?

BRAINSTORMING 1

POD TYPE

After going through Module One, has your POD designation changed? Put a check next to the POD type you want to pursue.

☐ COMMUNICATIONS POD

Bring community members together to receive and/or share information, education and trainings to increase climate readiness. This POD does not have to be in a building!

☐ SHELTER POD

Provide services for community members before, during and after emergencies such as extreme weather.

☐ RESOURCE POD

Connect community members to resources, materials, information, and services to increase climate readiness.



3 WHAT ARE THE CHALLENGES?

| THE CHALLENGE | THE VISION | THE RESOURCES |
|--|---|--|
| Describe a problem, vulnerability, or growth area affecting your climate readiness and community resilience. | Describe the goal or outcomes if this challenge is addressed. | What steps or questions must you consider to achieve the vision? What resources can help you address this? |
| CHALLENGE #1 | | |
| CHALLENGE #2 | | |

2 PRIORITIES

The goal of the Microgrant project is to experiment — testing an element on your journey to climate resilience and learning from it to inform your next project. Here, you will identify two main priorities you would like to focus on addressing.

Remember the 3 Project Ideas you came up with on page 19 of your Fieldguide? Take your top 2 Priorities and write them below.

Considering the vulnerabilities and insights from Module One, **do you want to continue with these priorities, or have they changed to better address the program goals?**

THE PROTOTYPE

Describe a experiment you could design to learn more.

RESILIENCE BADGES

Which resilience area does your project fall under? Circle it.

POD CRITERIA

Does your project relate to a specific criteria for your Pod type in the Fieldguide? If so, how?



NARROWING YOUR PROJECT

This worksheet will help you narrow down your project idea and develop an action plan.

CHALLENGE #1

TEST/LEARN

CHALLENGE #2

Write the top priority you hope to test/learn through your project for each challenge.

DESIGN

How is your project designed to help you learn that 1 thing?



YES



DEVELOPING



NO

RESOURCES

Do you have the materials/resources you need for this project?



TIMELINE

Is this a project that can be completed within 4 months?



TIME-SENSITIVE

Is this project time-sensitive or an opportunity with a limited window? For example, does it depend on a particular season or the availability of a specific partner or collaborator?



ORDER OF PROJECTS

Would learning from one project inform the other, and is there a benefit to completing one project before the other?



FINANCES

What is a general budget for this project? Will the microgrant be the only funds you need?



PEOPLE & PLACES

Do you have the people and places setup to get this done?



YOUR PROJECT PLAN

Target Completion Date

KEY STEPS

STEP 1

Key Activity

Timeline

Related Expenses

STEP 2

Key Activity

Timeline

Related Expenses

STEP 3

Key Activity

Timeline

Related Expenses

STEP 4

Key Activity

Timeline

Related Expenses

How does this project increase climate equity for your vulnerable and underserved community members?

Circle the mode you are testing. How will the mode look after project implementation?



THE IMPACT

What is the **tangible result** of your project?

What is the impact of this result?

How will you collect this information?

MODULE ONE

**NOW YOU ARE READY
TO FILL OUT THE
MICROGRANT FORM!**

As you complete the application,
remember that you've already
answered many of these
questions throughout the module.



**MICROGRANT
LINK HERE**



WHO?
cares
WE ALL SHOULD.